

Orange County Fire Authority

Community Risk Reduction

1 Fire Authority Road, Building A, Irvine, CA. 92602 www.ocfa.org 714-573-6100

High-Piled Combustible Storage



Guideline G-01

Serving the Cities of Aliso Viejo • Buena Park • Cypress • Dana Point • Garden Grove • Irvine • Laguna Hills • Laguna Niguel • Laguna Woods
Lake Forest • La Palma • Los Alamitos • Mission Viejo • Rancho Santa Margarita • San Clemente • San Juan Capistrano • Seal Beach
Santa Ana • Stanton • Tustin • Villa Park • Westminster • Yorba Linda and Unincorporated Areas of Orange County

High-Piled Combustible Storage

1. PURPOSE

The intent of this guideline is to provide the Orange County Fire Authority (OCFA) specific requirements for the protection of high-piled storage (HPS), based on, and in addition to, Chapter 32 of the 2025 California Fire Code (CFC), the 2025 California Building Code (CBC), 2025 NFPA 13, and locally adopted ordinances enforced by OCFA. The following requirements will clarify OCFA's expectations regarding the measures required by code, which require more detailed explanations.

2. SCOPE

This guideline provides the OCFA specific requirements for all HPS within the jurisdiction of the OCFA.

3. SUBMITTAL REQUIREMENTS

Refer to OCFA Guideline A-02 for the current plan submittal requirements.

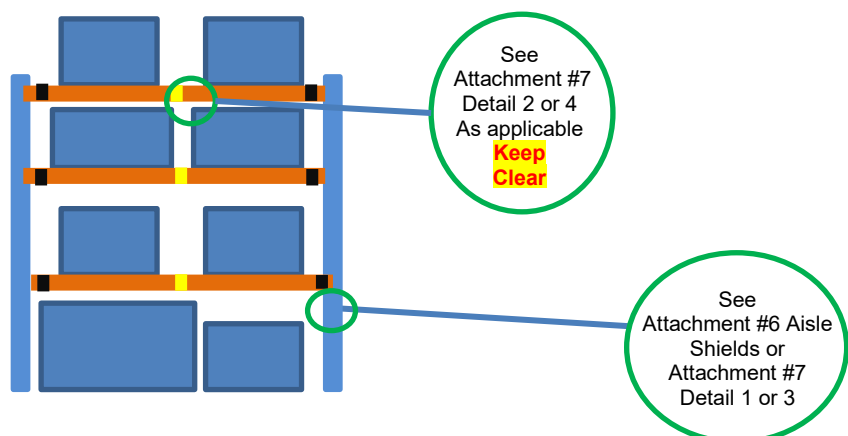
In addition to the other plans submittal requirement listed in this guideline and CFC 3201.3, Attachment 9 shall be completed and copied onto the plan.

One Attachment 9 shall be completed per storage area, commodity classification, storage method (single-, double-, and multi-rack, solid), and sprinkler requirement.

4. RACK FLUE SPACES

Requirements for flue spaces within the rack storage are provided in CFC Table 3208.3. Single and double row racks shall be equipped with a transverse flue space. A mechanical means shall be provided to maintain the transverse flue space at the uprights for 6-inch flues or when the rack upright column is less than 3 inches wide (Attachment 7).

The device and its installation method shall be identified on the plan. Transverse flue spaces between uprights shall be marked with a 3 or 6 inch yellow strip on the load beam with words in red that read, "Keep Clear," as indicated below. Durable vinyl tape, paint, or other methods as approved by OCFA may be used. (CFC 3208.3)



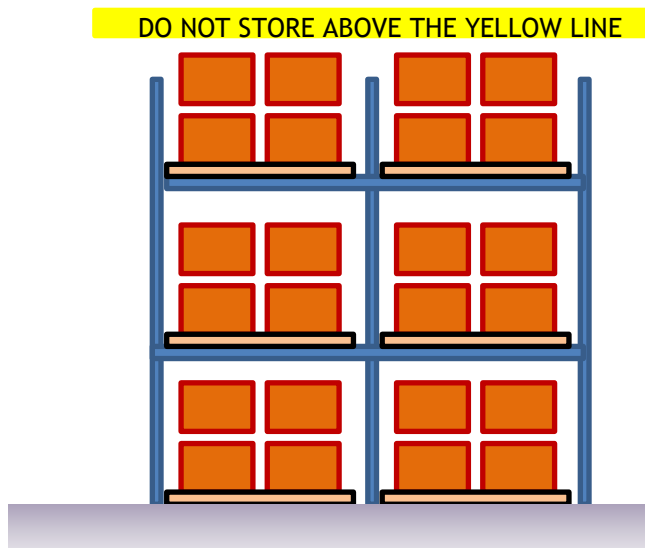
Double-row racks shall be equipped with a pallet stop along the longitudinal flue space (when required per CFC Table 3208.3) at each level above the lowest tier. The stop along the longitudinal flue space shall be steel and shall extend a minimum of 4 inches above the shelf or cross member, or other method (i.e., 9-gauge chain link) approved by the fire code official (CFC 3208.3; see Attachments 1-6 & 8). The device and its installation method shall be identified on the plan. For double row racks, where products are hand-stacked, chain link shall be securely attached to the rear of both racks. The chain link shall be a minimum of 12-gauge. Attachment method shall be in compliance with Figure 3208.3 (Attachment 6) or other methods as approved by the fire code official.

Note: Regardless of the design of the pallet stop, the flue space shall be measured from the back of the pallet stop to the back of the pallet stop (see Attachment 8).

Transverse flue space is measured as the distance between the loads, not the distance between the racks. The upright may be included in the measurement if they are not obstructed by commodities nor have solid shelving. Certain hazardous materials require the flue measurement to exclude the rack upright, per CFC Chapters 50-67.

5. STORAGE HEIGHT LIMIT

A physical method of visually indicating the maximum allowable storage height shall be provided (CFC 3205.7). Provide a detail on the plan of the method that will be used.



Note: As required by the fire code official, a visual method of indicating the maximum allowable storage height shall be provided. (CFC 3205.7)

6. TECHNICAL ASSISTANCE

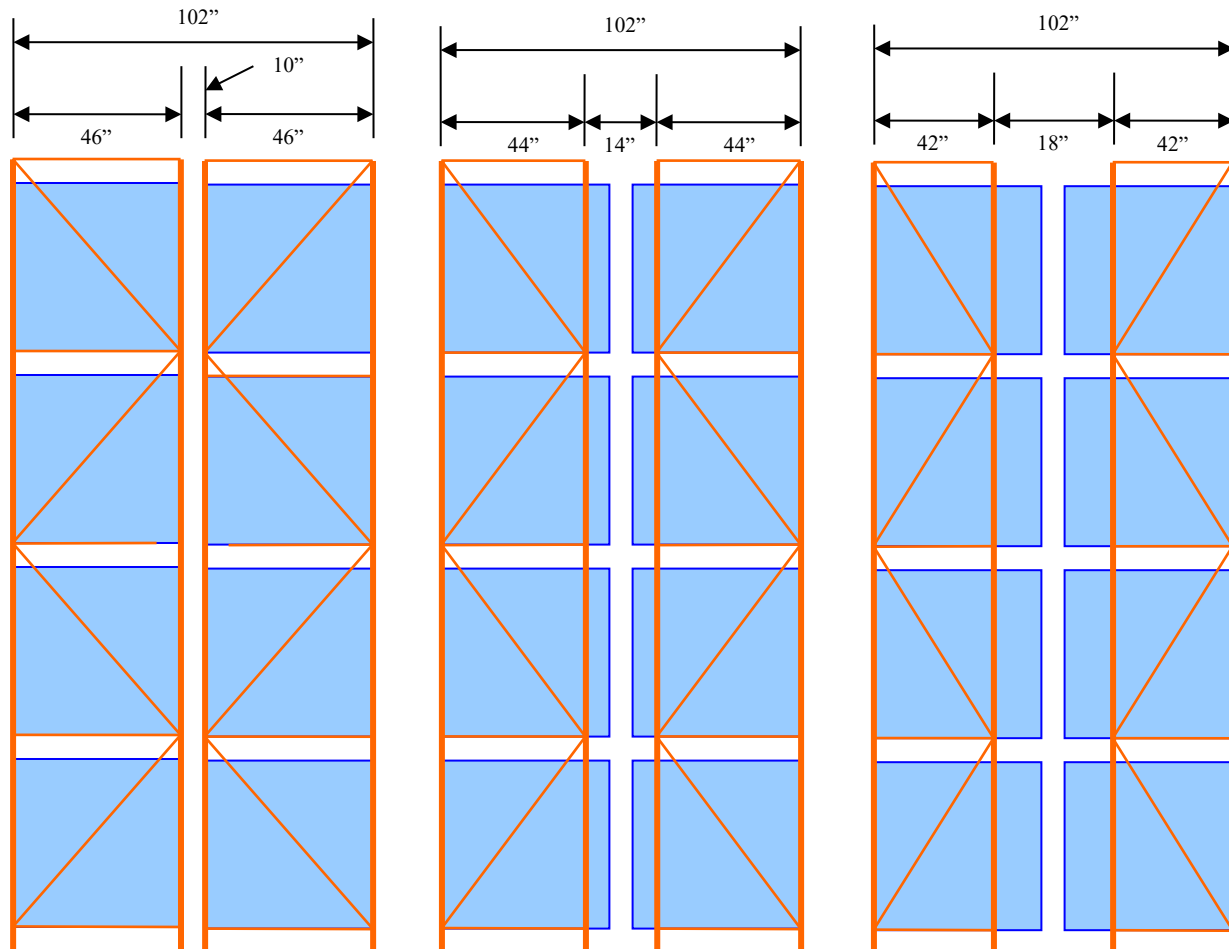
Due to the complexity of the designs specified within the CFC and adopted standards, it may be necessary to obtain the service of a fire protection design professional to assist with developing a design that meets the requirements of the CFC and NFPA 13.

7. STANDARD HIGH-PILED STORAGE NOTES**ORANGE COUNTY FIRE AUTHORITY
NOTES FOR HIGH-PILED STORAGE****PLACE THE FOLLOWING NOTES VERBATIM ON THE PLAN UNDER "FIRE DEPARTMENT NOTES":**

- a) Fire Department inspection required. Schedule 2 days in advance at 714-573-6150.
- b) A CFC permit is required for HPS and will be issued by an OCFA inspector.
- c) Locations and classifications of extinguishers shall be in accordance with CFC 906.2 and Chapter 3, Title 19 CCR and placement is subject to the approval of the fire inspector.
- d) Storage, dispensing or use of any flammable/combustible materials and other hazardous materials shall comply with CFC regulations.
- e) Exit doors shall be openable from the inside without the use of a key or any special knowledge or effort.
- f) Modification to fire sprinkler and alarm systems shall comply with 2025 NFPA 13 and 72. A separate plan submittal is required.
- g) Fire sprinkler systems and all control valves shall be monitored by a U. L. listed central alarm station or be supervised per 2025 CFC Chapter 9. A separate plan submittal is required for the installation of the monitoring system.
- h) Fire apparatus access roads shall be unobstructed. Access gates shall be approved prior to installation and shall be in compliance with CFC 504 and OCFA guidelines.

ATTACHMENT 1

LOAD BEAM CONFIGURATION NOT REQUIRING PALLET STOPS

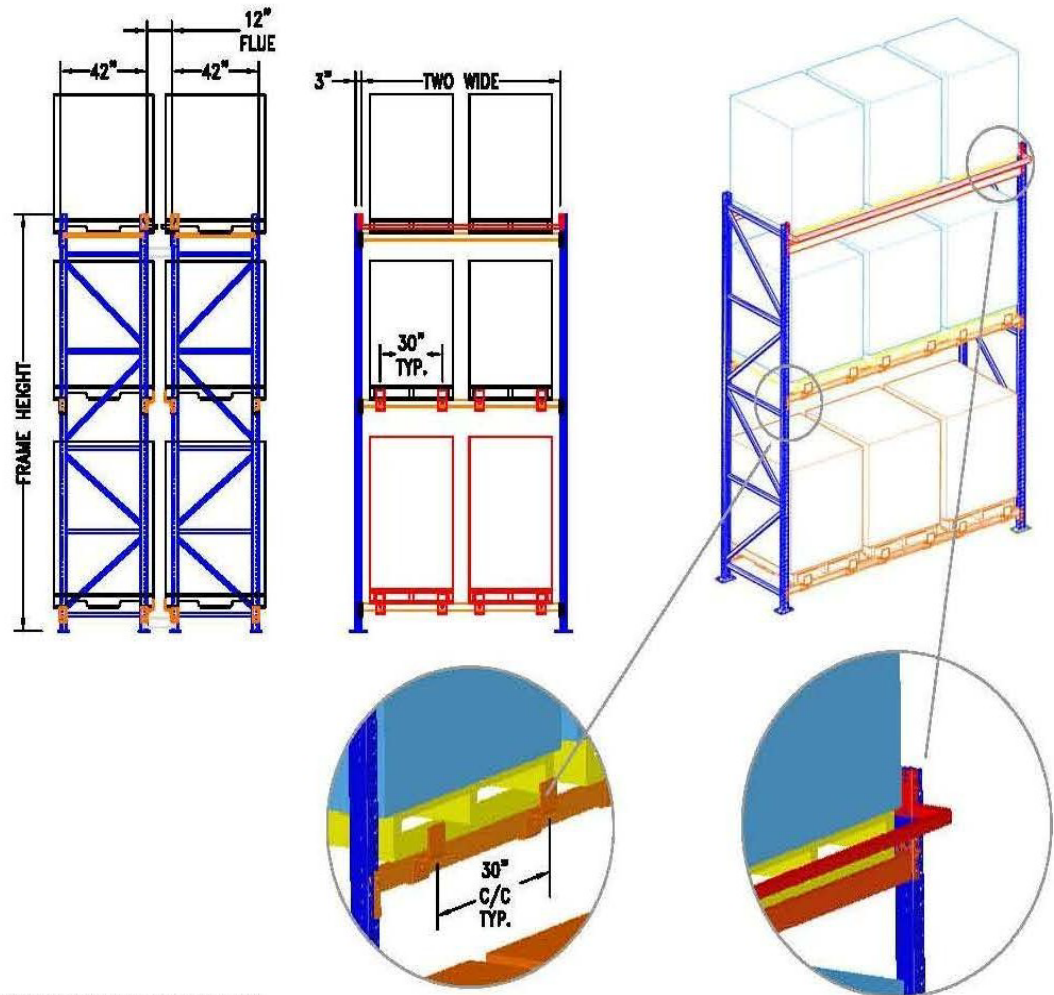


NOTES:

1. MAXIMUM PALLET DEPTH 48 INCHES.
2. STORAGE ON LOAD BEAM ONLY, NO SHELVING, WIRE MESH GRATING, OR PALLET SUPPORTS.
3. 6-INCH FLUE SPACE SHALL BE MAINTAINED AT ALL TIMES.
4. CHANGE TO THE STORAGE CONFIGURATION REQUIRES PRIOR OCFA APPROVAL.
5. WHEN 42-INCH-DEEP UPRIGHTS ARE UTILIZED WITH AN 18-INCH ROW SPACER AND A TYPICAL 48"x40" PALLET IS USED, NO PALLET STOPS ARE REQUIRED.
6. WHEN 44-INCH-DEEP UPRIGHTS ARE UTILIZED WITH A 14-INCH ROW SPACER AND A TYPICAL 48"x40" PALLET IS USED, NO PALLET STOPS ARE REQUIRED.
7. WHEN 46-INCH-DEEP UPRIGHTS ARE UTILIZED WITH A 10-INCH ROW SPACER AND A TYPICAL 48"x40" PALLET IS USED, NO PALLET STOPS ARE REQUIRED.

ATTACHMENT 2

LONGITUDINAL FLUE SPACE MECHANICAL REQUIREMENTS



NOTES:

RACKS WITH OPEN SHELVES SUPPORTING PALLETS SHALL BE PROVIDED WITH A PALLET / COMMODITY STOP.

FOR ROLL FORM RACKING A FULL LENGTH FRAME MOUNTED SUPPORT IS TO BE USED PER THE ATTACHED DETAIL.

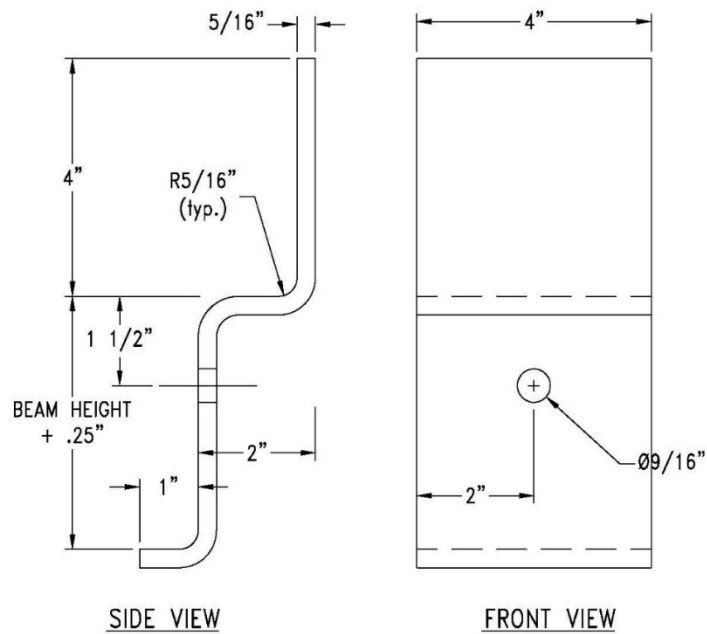
FOR STRUCTURAL (C-CHANNEL TYPE) RACKING, USE A BOLT IN Z TYPE SUPPORT ON 30" CENTERS PER THE ATTACHED DETAIL.

PS-X (PALLET STOPS - LENGTH") - USED FOR STRUCTURAL C CHANNEL BEAMS
SEE ATTACHMENT 3

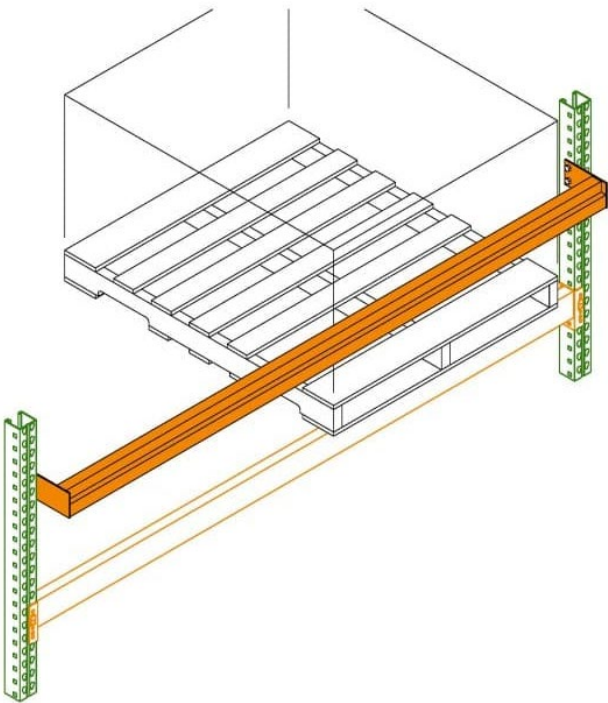
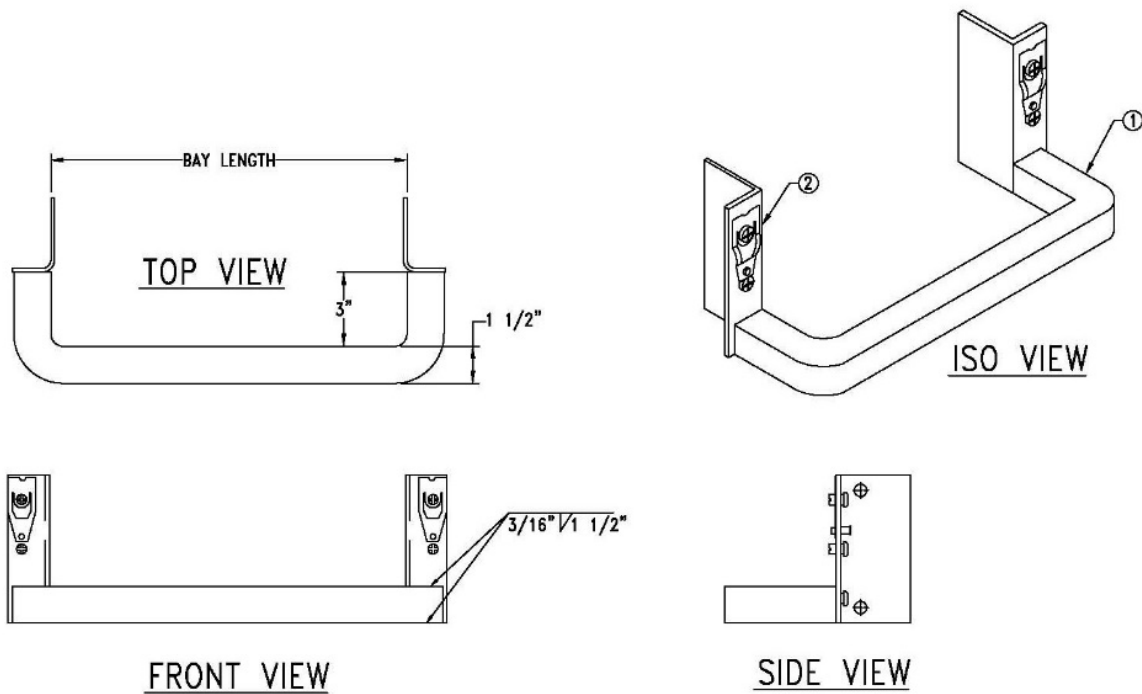
PBS-XX (PALLET BACK STOP - LENGTH")
ATTACHED 4" FROM TOP OF LOAD BEAM
USED FOR ROLL FORM RACKING BEAMS
STOP CAN BE USED FOR DECKED RACK IF
ON 12" VERTICAL CENTERS - SEE
ATTACHMENT 4

ATTACHMENT 3

“C”-CHANNEL-BEAM PALLET STOP DETAIL

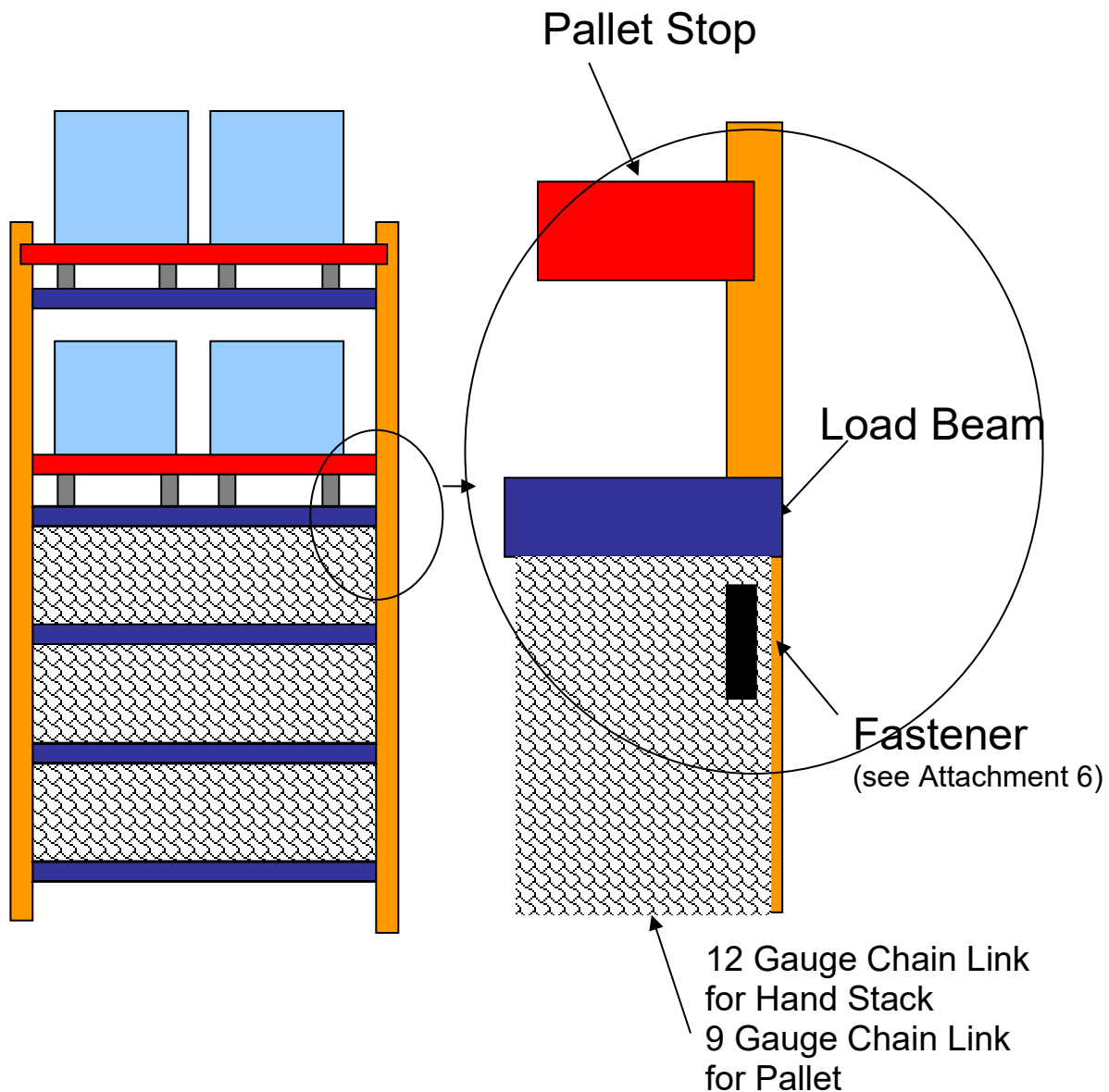


ATTACHMENT 4
ROLL-FORM-RACKING PALLET STOP DETAIL



ATTACHMENT 5

STORAGE CONFIGURATION FOR HAND STACK RACK



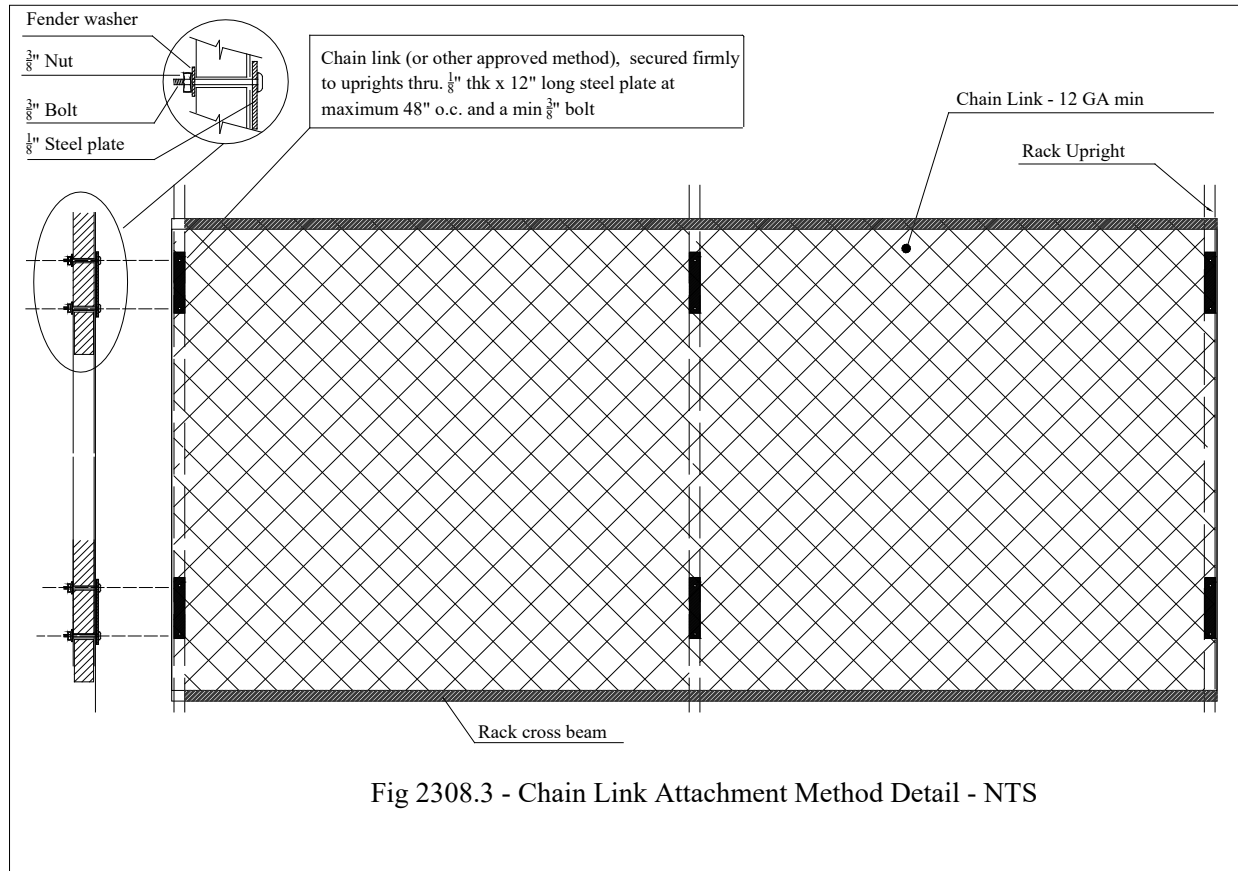
NOTES:

HAND STACKING/PICKING RACKS: HAND STACKING NON-PALLETIZED AREAS SHALL BE PROVIDED WITH A MEANS TO ENSURE THAT THE FLUE SPACES ARE MAINTAINED. HAND STACK LOCATION WILL BE SECURED FLUSH TO THE REAR COLUMN OF EACH FRAME AS SHOWN IN ATTACHED DETAIL (SEE ATTACHMENT 6 FOR CHAIN LINK).

9-Gauge Chain Link Fence for Pallet Loads.
12-Gauge Chain Link for Hand Stack Loads.

ATTACHMENT 6

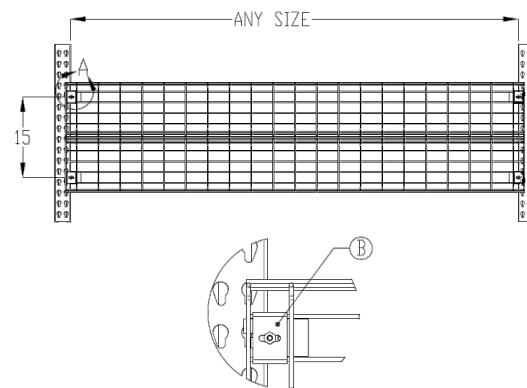
CHAIN LINK ATTACHMENT METHOD DETAIL



AISLE SHIELD



Method 1



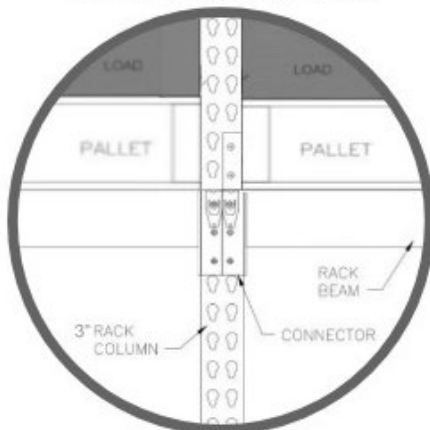
Method 2

ATTACHMENT 7

TRANSVERSE FLUE SPACE

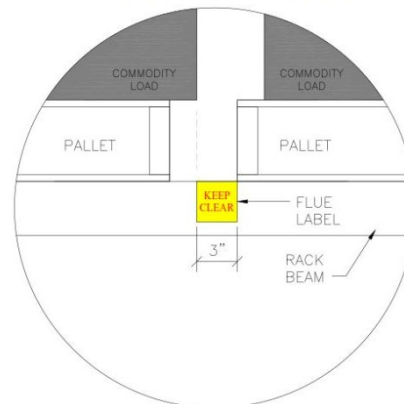
MECHANICAL AND MARKING REQUIREMENTS

DETAIL 1
MECHANICAL ENFORCEMENT DEVICE AT RACK COLUMN
(NET 3" TRANSVERSE FLUE)



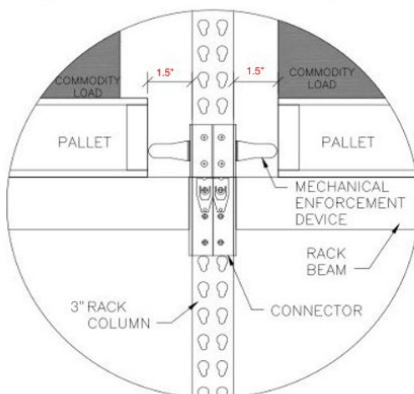
NOTE: TO BE USED WITH DETAIL 2 ONLY

DETAIL 2
3" TRANSVERSE FLUE LABEL
BETWEEN PALLET LOADS



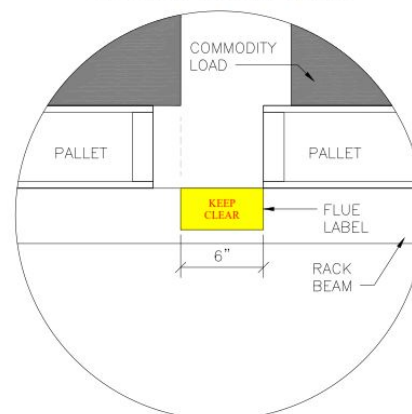
NOTE: TO BE USED WITH DETAIL 1 ONLY

DETAIL 3
MECHANICAL ENFORCEMENT DEVICE AT RACK COLUMN
(NET 6" TRANSVERSE FLUE)



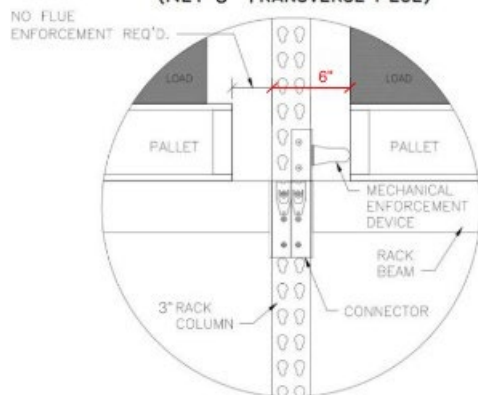
NOTE: TO BE USED WITH DETAIL 4 ONLY

DETAIL 4
6" TRANSVERSE FLUE LABEL
BETWEEN PALLET LOADS



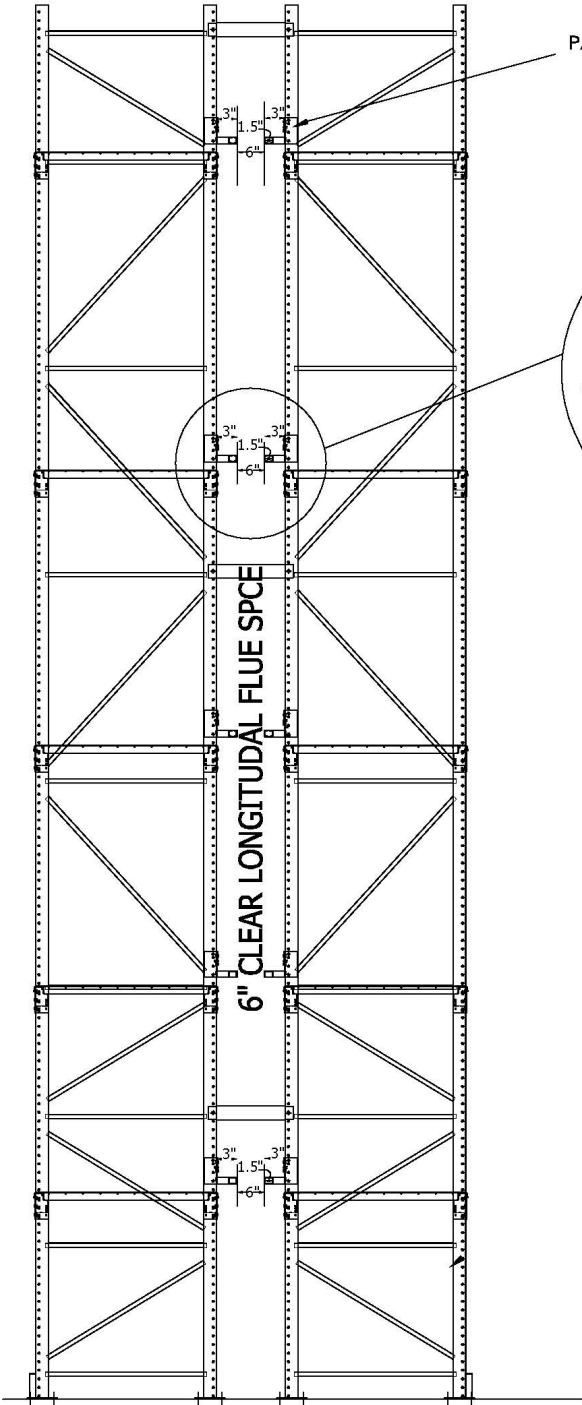
NOTE: TO BE USED WITH DETAIL 3 ONLY

DETAIL 5
MECHANICAL ENFORCEMENT DEVICE AT RACK COLUMN
(NET 6" TRANSVERSE FLUE)

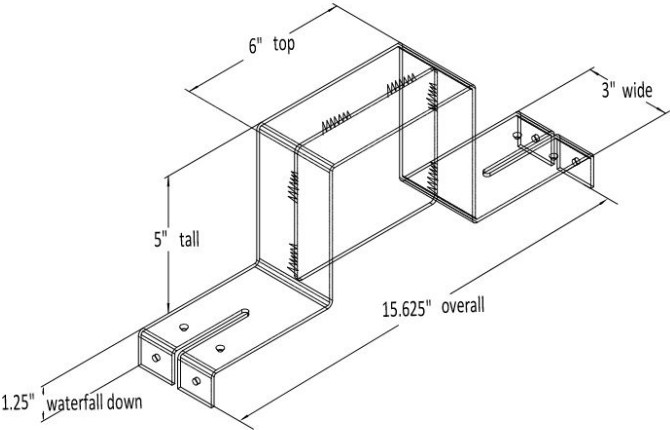
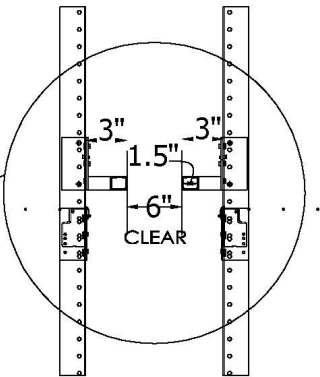


NOTE: TO BE USED WITH DETAIL 2 ONLY

ATTACHMENT 8
Pallet Stop
Longitudinal Flue Clear Space



PALLET STOP DETAIL.



ATTACHMENT 9

The following form shall be completed for each storage configuration and/or storage area. The completed form shall be copied onto the HPS plans for all projects within OCFA jurisdiction:

- Commodity classification: (Fill in commodity description at the bottom of page.)
 - ☐ I ☐ II ☐ III ☐ IV
 - Plastics: ☐ Group A ☐ Group B ☐ Group C
 - ☒ Expanded ☐ Free flowing ☐ Cartoned ☐ Unstable ☐ Encapsulated ☐ Non-encapsulated
 - ☐ Other _____
- Area designated in the building and used for high piled storage is _____ sq.ft.
 - CLASS _____ commodity, _____ sq. ft.
 - CLASS _____ commodity, _____ sq. ft.
 - CLASS _____ commodity, _____ sq. ft.
- Maximum permitted storage height (solid pile _____ ft. rack _____ ft.)
- Roof/ceiling height: maximum _____ ft.; minimum _____ ft.
- Minimum distance between top of storage and sprinklers _____ ft.
- The following storage methods are employed at this facility:
 - ☐ Solid pile storage ☐ Palletized ☐ Single-row rack ☐ Double-row rack ☐ Multi-row rack
 - ☐ Other _____
- Rack storage shelf: ☐ Load beam only ☐ Wire mesh ☐ Wood slates ☐ Solid (shelf area _____ sq.ft.)
 - ☐ Other (Describe): _____
- Smoke/heat vents required? ☐ Yes ☐ No
 - Operation of smoke/heat vents (if applicable)
 - ☐ Manual ☐ Automatic via fusible link which releases at _____ °F
 - (Note: New installations require manual & automatic release)
 - Inspection report shall indicate which vents were tested
- Draft curtains required? ☐ Yes ☐ No
- Fire sprinkler details: ☐ Standard/CMDA ☐ ESFR ☐ CMSA ☐ Other _____
 - K _____ Temp rating _____ °F ☐ Pendent ☐ Upright
 - Design _____ gpm/sq.ft. over _____ sq.ft. or _____ heads @ _____ psi
 - Requiring _____ gpm @ _____ psi at ☐ BOR ☐ Other _____; Hose _____ gpm
 - Maximum of _____ sq.ft. per fire sprinkler
- In-rack sprinklers required? ☐ Yes ☐ No
 - There is/are _____ level(s) of in-rack fire sprinkler protection.
 - Design _____ heads @ _____ gpm ☐ psi
- Column protection required? ☐ Yes ☐ No Protection method: _____
- The aisles between the racks shall be maintained at _____ feet.
- Fire Doors required? ☐ Yes ☐ No
- Flue Spaces required? ☐ Yes ☐ No
- Flue space between racks shall be maintained a minimum of:
 - Transverse _____ inches ☐ Must be vertically aligned (for storage >25')
 - Longitudinal _____ inches
- Pallet Stops Required? ☐ Yes ☐ No
 - Longitudinal pallet stop configuration:
 - ☐ Chain link ☐ Roll form ☐ "C" channel ☐ Other _____
 - Transverse Flue Pallet Stop configuration:
 - ☐ Mechanical means (flue keepers, etc.) ☐ Load beam markings "Keep Clear" (labels, stickers, etc.)
 - Hand Stack? ☐ Yes ☐ No # of tiers: _____ Chain link required? ☐ Yes ☐ No
- Idle pallet floor storage? ☐ Yes ☐ No Max height _____ ft. wood; Max height _____ ft. plastic
 - Idle pallets are **NOT** permitted to be stored in the racks.
- Storage configuration and height delineated by indication on floor or walls and/or ceiling. ☐ Yes ☐ No
- Additional conditions: _____

Are there any hazardous materials stored in the High Piled Storage Area?

- ☐ Yes - Provide the Service Request (SR#) for the approved hazardous material review - SR# _____
- ☐ No - Provide a note on the plans stating, "No hazardous material storage allowed without OCFA approval."

Commodity description, including packaging materials (if no packaging state "No Packaging"): _____